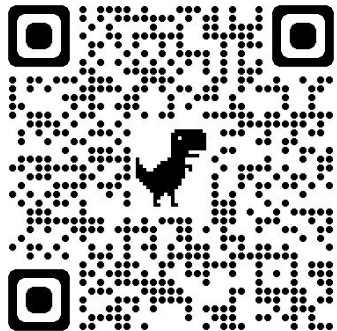


October RA Agenda



October Representative Assembly

October 18, 2023



2023-2024 ETA RA Dates

October 18

November 15

January 17

February 21

March 20

April 17

May 15

[Full 2023-2024 ETA Meeting Calendar](#)



Consent Agenda



October 18, 2023 Agenda

- I. Call to Order**
- II. Consent Agenda**
 - A. Approval of [Sept. 20, 2023 minutes](#)
 - B. Approval of Oct. 18, 2023 agenda
- III. Meeting Norms**
 - A. Be recognized by the chair prior to speaking
 - B. Name and School when speaking
 - C. No food or drink allowed
 - D. Questions need to be general and not individual
 - E. Avoid Side Conversations
 - F. No photos of the slide deck
- IV. Guest**
 - A. Lela Majstorovic and Matt Raimondi
- V. President's Report**
 - A. Bargaining Update
- VI. New Business**
 - A. [ETA Bylaw Amendment](#)
- VII. 1st Vice President Report**
 - A. SIP and SD Training
- VIII. Treasurer's Report**
 - A. Budget Report
- IX. Secretary's Report**
 - A. Membership Report
- X. Region 24**
 - A. [IEA Representative Assembly Nomination Form](#)
- XI. Acknowledgments**



ETA Meeting Norms

Meeting Norms

- Be recognized by the chair prior to speaking
- Blue Cards are for Registered Reps, Green Cards are for guests
- Cards MUST be visible with your name and school/department
- State your name and school when recognized by the chair
- No food or drink allowed
- Questions need to be general and not individual in nature
 - If you have individual questions, reach out to your section director
- Avoid Side Conversations
- No photos of the slide deck



Guest Lela Majstorovic and Matt Raimondi

2023 ISBE Summative Designations

ETA Rep Assembly
October 18, 2023

What is an Annual Summative Designation?

16

- **Multiples measure** index of academic achievement and student success
- Given **annually** and based on the prior year's performance
- Designed to **identify schools** for support by placing them in **school improvement status**
 - Including schools with student groups needing support in otherwise reasonably performing schools
 - A school **in school improvement status remains in status** for 4 years, regardless of changes to its annual summative designation during those years in order to encourage sustainability of progress



Five Annual Summative Designations

Exemplary

- Overall performance in the top 10% of all schools
- Must have no targeted student groups at or below the “all students” group of the lowest-performing 5% of schools
- High schools must have a graduation rate higher than 67%

Commendable

- Overall performance not in the top 10% of all schools
- Must have no targeted student groups at or below the “all students” group of the lowest-performing 5% of schools
- High schools must have a graduation rate higher than 67%

Targeted Support

- One or more student groups performing at or below the “all students” group of the lowest performing 5 percent of schools; groups must have at least 20 students in at least five of eight indicators, one of which must be non-academic

STUDENT GROUPS

Demographics

- American Indian or Alaska Native
- Asian
- Black or African American
- Hispanic or Latino
- Native Hawaiian or Other Pacific Islander
- Two or More Races
- White

Programs

- Children with disabilities
- Economically disadvantaged students
- English Learners
- Former English Learners

A Targeted Support designation initiates targeted school improvement status and the school begins a four-year cycle of school improvement.

Comprehensive Support

- Overall performance in the bottom 5 percent of Title I-eligible schools statewide AND
- All high schools with a graduation rate below 67 percent AND
- All schools that have completed a full four-year Targeted Support school improvement cycle, where the performance of one or more of the originally Targeted student groups remains at or below the level of the “all students” group in the lowest-performing 5 percent of Title I eligible schools at the end of the cycle

A Comprehensive Support designation initiates comprehensive school improvement status and the school begins a four-year cycle of school improvement.

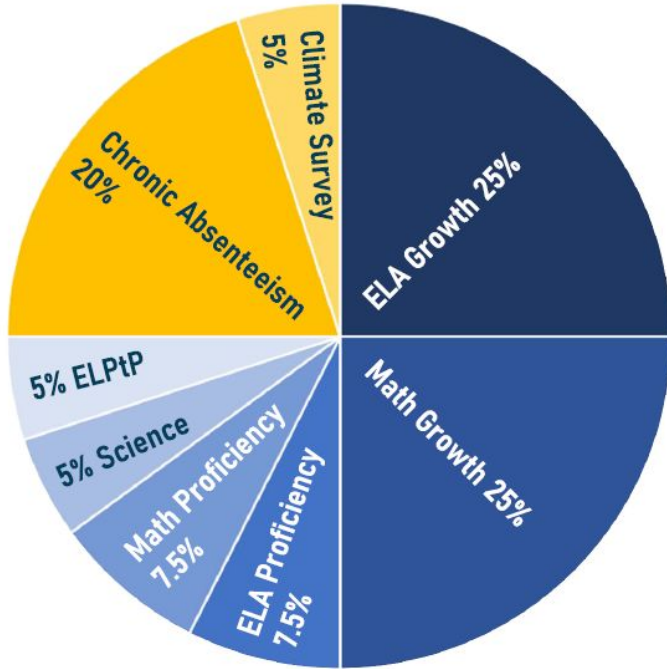
Intensive Support

- A school that has completed a full four-year Comprehensive Support school improvement cycle, but whose performance remains in the lowest-performing 5 percent Title I eligible schools in Illinois or is a high school that has a graduation rate of less than 67 percent or less at the end of the four-year improvement cycle.

An Intensive Support designation initiates Intensive school improvement status and the school is subject to more rigorous state-determined action.

2023 Indicators and Weights

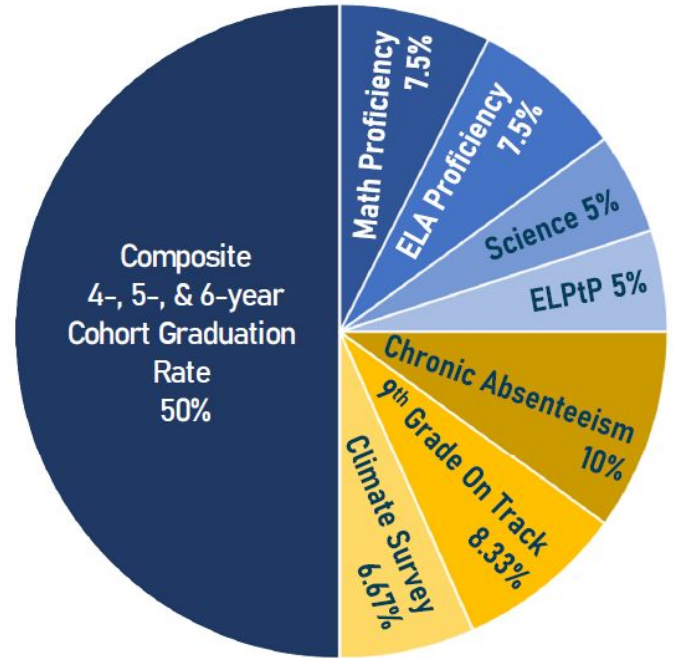
Elementary/Middle Band (ES)



2023
Data

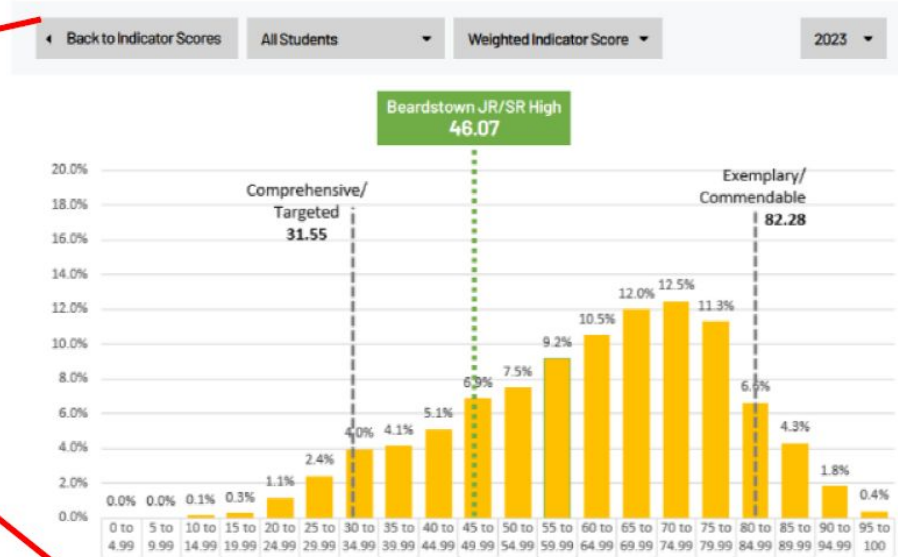
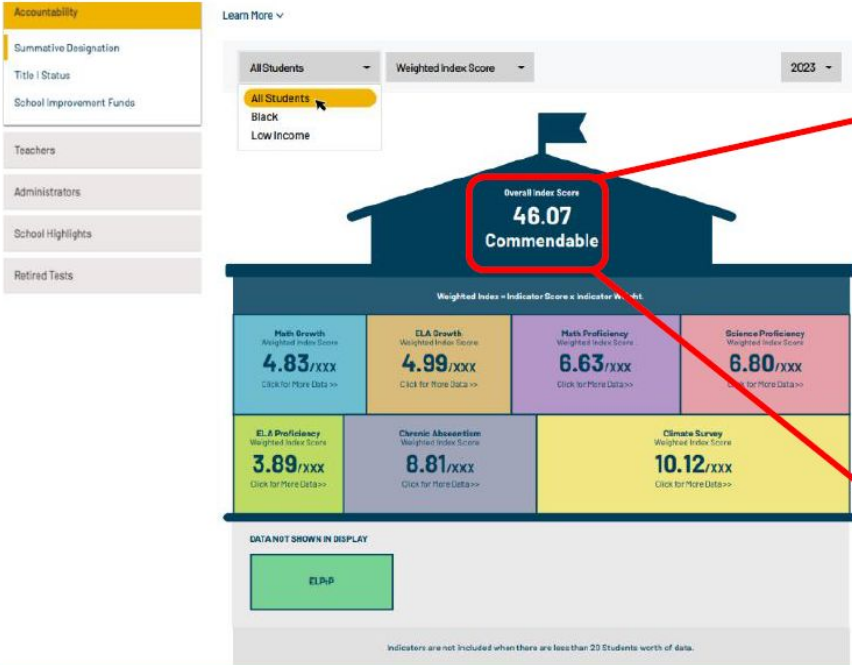
(ELPtP)
English
Learner
Progress to
Proficiency

High School Band (HS)



High Level (mockup)

Drill Down (mockup)



Who Is Included in the Calculation?

21

- Students who have been at the school for “at least half the school year”
 - Operationalized as 134 **calendar** days
 - Why 134 calendar days?
 - Average length of all district calendars in the state, divided in half
- Groups with at least **20 students per indicator** in at least 5 of 8 indicators, of which 1 must be a student success school quality indicator
 - High school band has multiple single-grade indicators (i.e. 9th grade on track, ELA proficiency, math proficiency, science proficiency, & graduation rate)



Each Student Has One Accountable School

22

- Students are assigned to their **home school** of longest enrollment, where that enrollment is greater than or equal to 134 calendar days
 - Except for Graduation Rate, where the “Last Home School Enrollment” rule applies, regardless of the length of the enrollment
- Enrollment can be non-consecutive, so long as the total meets or exceeds the 134 calendar day requirement
- This differs from Report Card student assignment rules
 - Although most report card metrics are by home school, a few are by serving school (e.g. student to teacher ratio) and/or other minor differences
 - Thus, **your summative raw performance calculations will not always match your report card calculations**
 - To see the differences by metric, please see the Report Card and Summative Business Rules at <https://www.isbe.net/Pages/Report-Card-Metrics.aspx>
 - Official 2023 summative designation business rules will be posted in mid-September, once all system testing is final



Student Demographic Groups

24

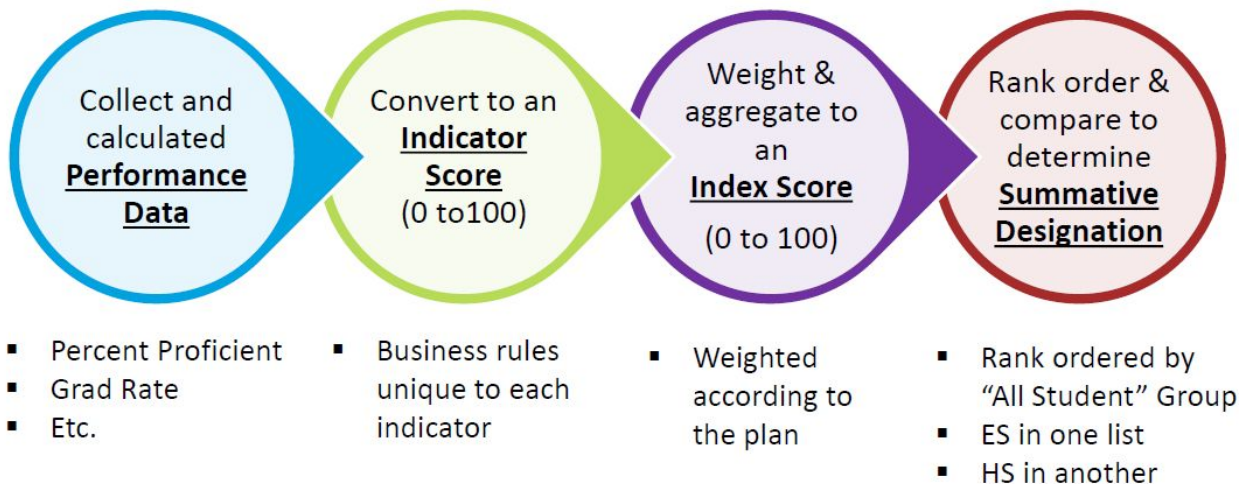
- **“All Student” group**
- Major racial & ethnic groups
- English Learners
- Former English Learners
 - Those who have reached proficiency
- Economically disadvantaged students
- Children with disabilities
 - IEP or 504
- ← ~~Students formerly with disabilities~~
- Groups of 20 students or more per indicator
- All students are in at least 2 groups, some may be in more



Calculating Annual Summative Designations

26

4 Step Process



Summative Designation Resources

79

Home > Data & Accountability > Summative Designations

DATA & ACCOUNTABILITY SYSTEM OF ACCOUNTABILITY & ANNUAL SUMMATIVE DESIGNATIONS

Summative designations help families and communities understand how well schools are serving all students. Illinois has four summative designations within the statewide school accountability system: Exemplary, Commendable, Targeted, Comprehensive & Intensive. Targeted, Comprehensive, and Intensive schools receive additional funding and [supports](#) to build local capacity and improve student outcomes. The federal Every Student Succeeds Act has required states to provide a summative designation to each school with the required indicators since 2018. ISBE includes school designations annually in the [Illinois Report Card](#).

The Illinois Balanced Accountability Measure Committee and the Technical Advisory Committee help ISBE develop, implement, and monitor the state's school accountability system, including summative designations. More information on summative designation resources and processes can be found on the Individual Indicators page, or under Resources, Presentations & Webinars below.

FEATURED CONTENT – UPCOMING WEBINARS

August 21, 2023: Summative Designation Deep Dive

Please join us for a webinar from 8:30 a.m.-Noon on August 21!

This session will provide a deep dive into everything you could ever need to know about how annual summative designations are calculated. This session is appropriate for district or school administrators, those who are new to annual summative designations, or those who just want to refresh their knowledge for the fourth release of annual summative designations.

RESOURCES, PRESENTATIONS & WEBINARS



Individual Indicators



Technical Advisory Committee



Illinois Balanced Accountability Measure Committee



Accountability Data [By](#) Year



Resources for Family & Community

MORE SUMMATIVE DESIGNATION RESOURCES

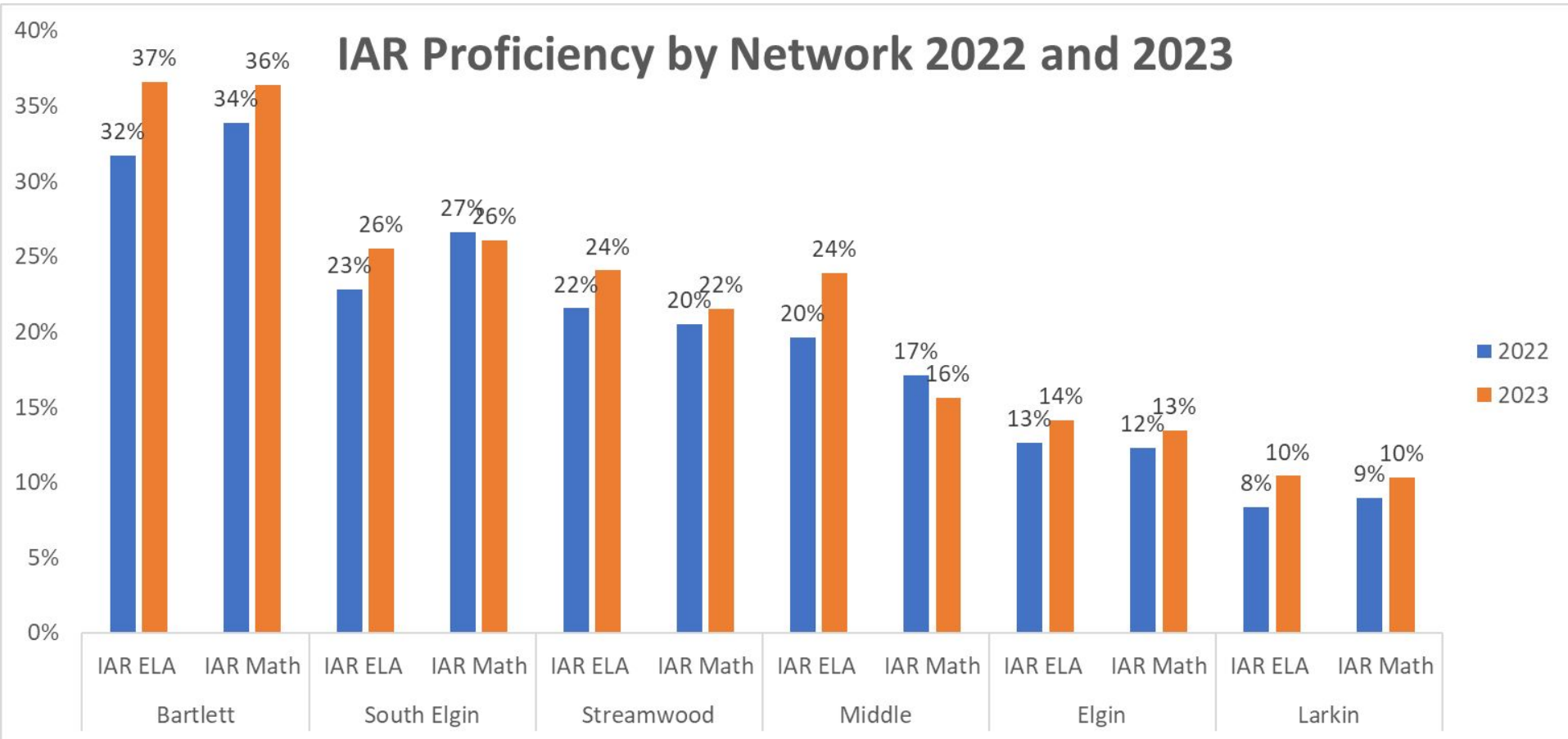
- [School & District Improvement](#)
- [School Improvement Common Language](#)
- [Data Reporting & Collections](#)
- [Illinois Report Card](#)
- [Every Student Succeeds Act \(ESSA\)](#)

- **Redesigned site available now!**
- Individual Indicators
- Family explainer videos coming!
- Resources, presentations & webinars remain on the main page
- Accountability data & statistics by year
- Links to other critical resources

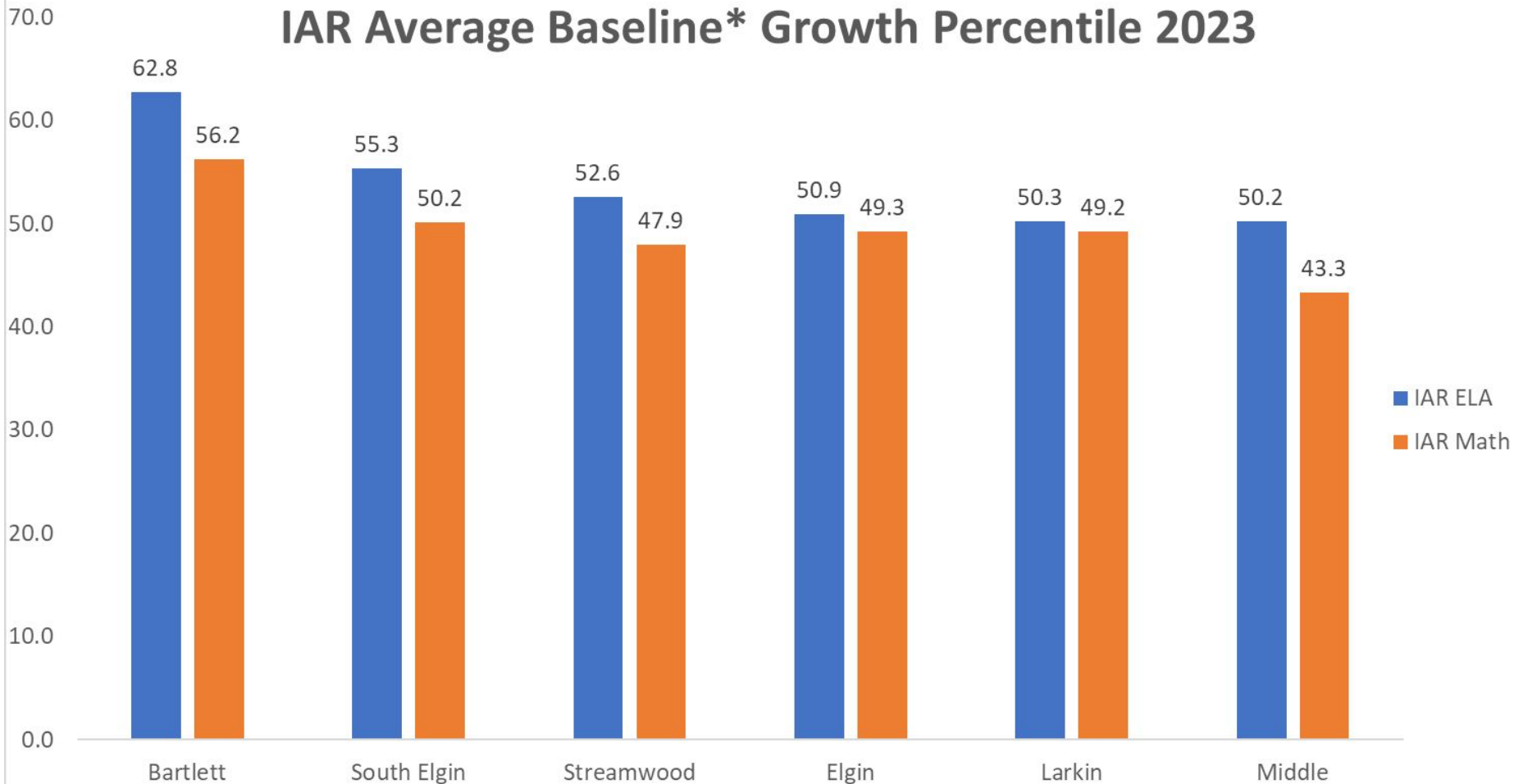


Illinois
State Board of
Education

IAR Proficiency by Network 2022 and 2023

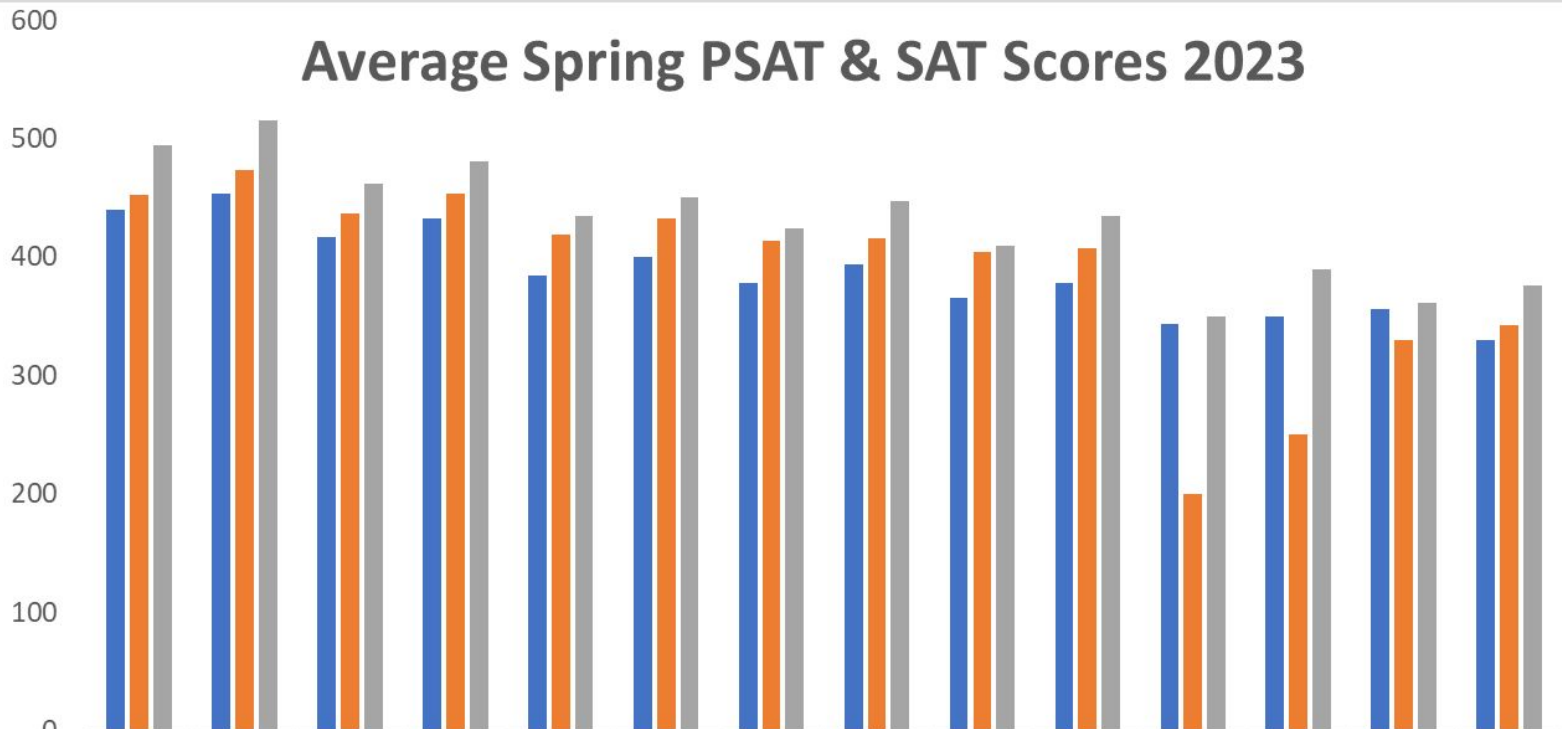


IAR Average Baseline* Growth Percentile 2023



*Baseline growth percentiles are not centered at 50 and normed from 2019 data

Average Spring PSAT & SAT Scores 2023

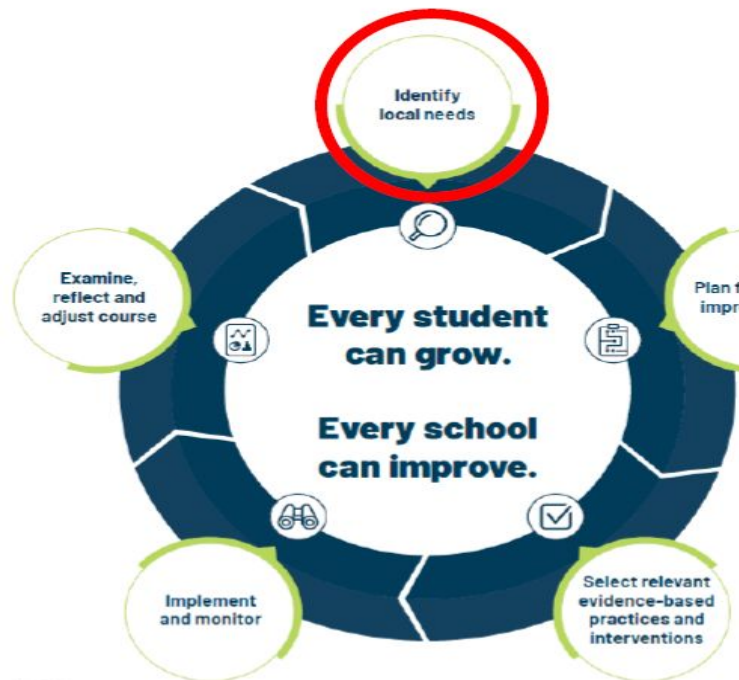


	Math	EBRW	Math	EBRW	Math	EBRW	Math	EBRW	Math	EBRW	Math	EBRW	Math	EBRW
	Bartlett		South Elgin		Elgin		Streamwood		Larkin		Central Schools		Dream, Phoenix, & New Beginnings	

■ 2023 - 09	440	454	417	433	384	400	378	394	366	378	343	350	356	330
■ 2023 - 10	452	474	437	454	419	433	414	416	405	407	200	250	329	343
■ 2023 - 11	495	515	462	481	435	451	425	447	410	435	350	390	361	376



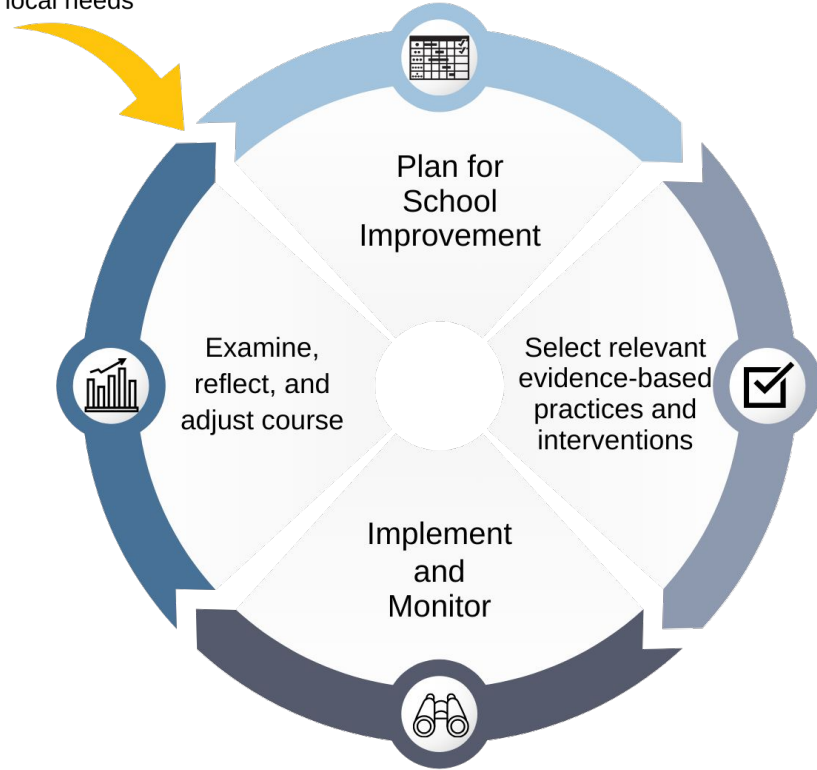
School-level needs assessment



- ✓ Completed during the Planning Year
- ✓ Use the School Level Needs Assessment results when conducting a Root Cause Analysis
- ✓ Informs initial school improvement planning efforts



Entry to System - Only Year 1:
Completing the Illinois Quality
Framework (IQF) to determine
local needs



What does a year look like?

- A year in the life of school improvement - [planning year](#).

Next Steps and General Timeline for Targeted & Comprehensive Schools

October 30th - Summative Designations become official

November 2023 - Meetings with targeted and designated school Principals

November 10th - Stakeholder Advisory Group and School Instructional Leadership Team (SILT) declared

November 2023 - First session on completing the Illinois Quality Framework (IQF)

December 2023 - Second session to complete the IQF (Due by Jan 31, 2024)

January 2024 - Root cause analysis session 1

February 2024 - Root cause analysis session 2

March to May 2024 - Planning for implementation & selecting learning partner(s)

New Business

Bargaining Update



Upcoming Bargaining Dates

~~September 26 - Full Day~~

~~September 27~~

~~September 28 - Full Day~~

~~October 2 - Full Day~~

~~October 4~~

~~October 5 - Full Day~~

~~October 10~~

~~October 11 - Full Day~~

~~October 12~~

~~October 17 - Full Day~~

October 23 - Full Day

October 24

October 25



Proposed Bylaw Amendment



ETA Voting Bylaw Amendment

Article Title: Article III - Membership

Article Section: Section 1

Date Submitted: September 20, 2023

Current Language: Any person represented by the Association in formal negotiations with the Board of Education is eligible for Active Membership in this Association with full rights and responsibilities. Active Membership shall be continuous until the member is no longer represented by the Association in formal negotiations with the district, resigns from the Association, or fails to pay membership dues.

Proposed Revision: Any person represented by the Association in formal negotiations with the Board of Education is eligible for Active Membership in this Association with full rights and responsibilities. **Full rights and membership include voting, holding office, serving on committees and commissions, serving as a delegate to IEA and NEA assemblies, participating in fringe benefits provided by the Association and related enterprises, and such other rights and privileges as are conferred through the Association governance. Individuals who join as a member when they are first eligible for membership immediately have full voting rights. For individuals who become members after they were first eligible or who rejoin as a member will only have voting rights after they have been a member for 3 pay periods.** Active Membership shall be continuous until the member is no longer represented by the Association in formal negotiations with the district, resigns from the Association, or fails to pay membership dues.



ETA Voting Bylaw Amendment

Rationale: This bylaw will establish and outline the privileges and responsibilities for members of the association, while preventing potential members from signing up for membership and dropping membership just to vote or temporarily engage in the benefits afforded to members of the association.

Budget Implications: There is no additional cost to implement this bylaw amendment.

The amendment above will be published for the Association Representative Assembly on Wednesday, September 20, 2023 and voted on by the Association Representative Assembly on Wednesday, October 18, 2023. An affirmative vote by $\frac{2}{3}$ of the members in attendance will then move the vote to the General Membership. The General Membership will vote by secret ballot on Tuesday, November 28. An affirmative vote by $\frac{2}{3}$ of the members voting will amend the bylaws. This bylaw would go into effect immediately upon its approval.



President's Report



1st Vice President Report



SIP and SD Training Opportunities

ETA Reps, SIP Chairs, and SD Chairs can reach out to Scott Sternal to go over the SIP and SD training that was jointly presented with the district last year

- Email scottsternal@theeta.org to set up a time
- Send 3 dates and times that your teams would be available
 - After school preferred for elementary and high school teams
 - Before or after school for middle school teams
- Limit the attendees to members of SIP and SD, building reps, and building administration
- The agenda includes a review of the SIP and SD training and answering questions about SIP and SD. The full presentation takes 60-90 minutes.

SIP and SD Training

Schools Trained or Upcoming

- Huff Elementary
- Elgin High School
- Larsen Middle School
- Nature Ridge
- Independence
- Illinois Park
- Wayne Elementary
- Horizon Elementary
- Coleman Elementary
- Hillcrest Elementary
- Tefft Middle School
- Executive Directors



Treasurer Report



Year-To-Date

- I. Affiliate Participation
- II. Contracts and Negotiations
- III. Executive Department
- IV. External Operations
- V. Governance
- VI. Internal Operations

Actual vs Budget	
	0.0%
	1.5%
	0.2%
	0.0%
	0.0%
	6.9%

Fiscal Year 2023-2024

0.7%

Secretary Report



Membership Update

Current Membership Numbers

- Members - 2545
- Potential Members - 143

We will maintain 3 lists for every building

- Members
- Potential Members - Section Directors should have shared the list to head reps
- Member Drops

Follow up with new members that have been hired since NTO

- Membership does not roll over from another district, must re-enroll
- Potential Members - join.ieane.org

Region 24



Fall Election Timeline

Date	Event
Friday, October 13, 2023	Nomination Window Opens
Wednesday, October 18, 2023	ETA RA
Tuesday, October 31, 2023	Nomination Window Closes
Wednesday, November 15, 2023	ETA RA
Tuesday, November 28, 2023	Election Date
Tuesday, December 5, 2023	Election Tally Due Date
Tuesday, January 9, 2023	Run-Off Election Date
Tuesday, January 16, 2023	Run-Off Tally Due Date



IEA RA Nomination Form

Nomination form is available on the ETA website.

[Nomination Form](#)

Nominations close at 5PM on Tuesday, October 31

Acknowledgements and Announcements