

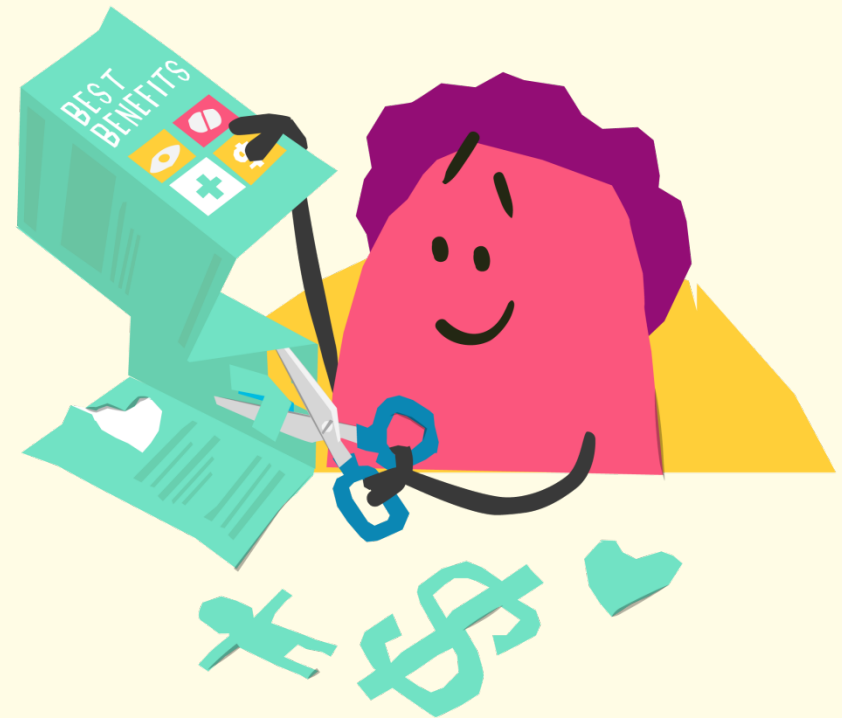


OPEN 2019
ENROLLMENT

Employee Benefits Guide

2019 Benefits Enrollment

- ALEX Tool
- Dates
- Wellness Program
- Plan Changes
- Tax Savings
- Tips to Enroll



Which Plan is Best for You?



Visit our online Benefits Counselor
www.myalex.com/districtu46/2019



When?



Starting November 1

You can:



RENEW



UPDATE



COMPARE PLANS



2018 Wellness Program



- Activity period: 1/1/2018 – 12/31/2018
 - Employee \$260
 - Spouse \$260
 - Both \$520
- Paid as taxable earnings approximately 60 days after end of quarter

2019 Wellness Program



- Biometric screenings = 30% of Rally Rewards
- No change to incentives or quarterly payment schedule

Rally Points for Incentive



- **Biometric Screening** 30%
- **Annual Physical** 40%
- **Rally Health Survey** 30%
- **Mammogram (females 40+)** 20%
- **Colonoscopy (50+)** 20%
- **Cervical Screening (females 20-65)** 20%
- **Complete 3 Rally Missions** 30%
- **Complete Rally Challenge** 30%
- **Use Healthcare Cost Estimator** 20%



Hearing Aids

covered up to \$1,000 per ear



Medical Plan Changes



PSA Test for Prostate Cancer: Not Preventive



Pharmacy Plan Changes



- Pharmacy moving to Walgreens Anchored Network
 - ✦ Walgreens, Costco, Jewel-Osco, Mariano's, Meijer, Walmart, Kroger and others
- CVS will be out of network
- 90-day maintenance prescriptions at Walgreens



Dental Plan Changes



- Dental annual benefit maximum increased to \$2,500
- Mouth guards covered at 80% restorative



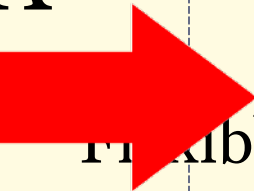
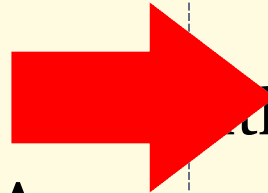
Tax Savings



Health Plan Election

Savings Account

Gold or Silver



Health Savings Account

HSA

PPO

Flexible Spending Account

FSA

Health Savings Account



- Only for Silver & Gold participants
- District contribution
- Change your contribution anytime
- Funds never “expire”
- Debit card and online bill payment



Healthcare FSA Flexible Spending Account

- Only for PPO participants
- Contribute up to \$2,650
- No District contribution
- Debit card for access to funds

Do I Have to Enroll?



- **YES!** All eligible employees **MUST** enroll!
(even new hires, and even if you want to keep the same plans!)
- Default enrollment for the Silver + H.S.A., Single coverage
Dental, Single coverage



Open Enrollment Employee Meetings

- Thursday, November 1, 2018
4:00 – 5:00 p.m.
Larkin HS – Room A20
- Tuesday, November 6, 2018
4:00 – 5:00 p.m.
Elgin HS – Library



Enroll in Munis Self-Service

<https://selfservice.u-46.org/MSS/>



Login

Username

 x

[Forgot your username?](#)

Password



[Forgot your password?](#)



Click "Benefits"



Munis Self Service

Resources

Welcome to Employee Self Service

Announcements

Personal information

[View profile](#)

████████████████████
████████████████████
████████████████████

Phone

HOME PHONE: ██████████
EXT: 5761: 847-888-5005

Email

Email: ██████████@u-46.org
Alt email: ██████████@gmail.com

Paychecks

[Show paycheck amounts](#)

Last Paycheck: 10/6/2017

Previous paychecks

10/6/2017		Details	
9/22/2017		Details	
9/8/2017		Details	
8/25/2017		Details	

Tools

- [Paycheck simulator](#)
- [View last year's W2](#)
- [Change your W4](#)

Home

Employee Self Service

Benefits

Certifications

Expense Reports


Pay/Tax Information

Personal Information

Click “Open Enrollment” from the Menu

Benefits


Current Year Elections

 You must complete your [open enrollment](#) before 11/10/2017.

Benefit	Current Election
HEALTH	WAIVE MEDICAL \$0.00 details
VISION	EMPLOYEE + FAMILY \$4.86 details
DENTAL	EMPLOYEE+FAMILY \$44.77 details
HEALTH SAVINGS ACCOUNT	Declined
FSA HEALTHCARE	Declined
FSA DEPENDENT CARE	Declined
SUPPLEMENTAL LIFE	SUPPLEMENTAL LIFE INSURANCE \$4.15 details
SPOUSE LIFE	SPOUSE LIFE INSURANCE 26 PAY \$5.08 details

Home
Employee Self Service

Benefits


Open Enrollment

Certifications

Expense Reports

Pay/Tax Information

Personal Information

Click “Blue Link” Next to Plan



Open Enrollment

Make Elections

Make a selection for each benefit, then click "Continue". *You must submit this enrollment by 11/10/2017.*

Welcome to Enrollment for your 2018 Benefits. Enroll between October 30th and November 10th. If you have already submitted your elections and wish to make a change prior to November 10th, please contact the Benefits Department at Benefits@u-46.org for access to your enrollment choices.

Benefit	Current Election	New Election	
HEALTH	CHOICE PLUS PPO EMPLOYEE+SPOUSE \$65.08 details	Election Not Made	Make New Election
VISION	EMPLOYEE + SPOUSE \$3.13 details	Election Not Made	Decline benefit No changes Make New Election
DENTAL	EMPLOYEE+SPOUSE \$25.38 details	Election Not Made	No changes Make New Election

Tips for Enrollment



- Elect or waive coverage for each plan listed
- If changing plans, add dependents
- Remember to click “Submit”
- Print confirmation page for your records



Need to Make Changes?



- You can make changes until November 15th
- HR may contact you if changes are needed to the plans you have selected
- Any changes needed outside of Open Enrollment must have documented life change (birth, marriage, divorce, etc.) – Contact Benefits Team

Questions?

Email - Benefits@U-46.org

Phone - (847) 888-5000

Ext. 5761

