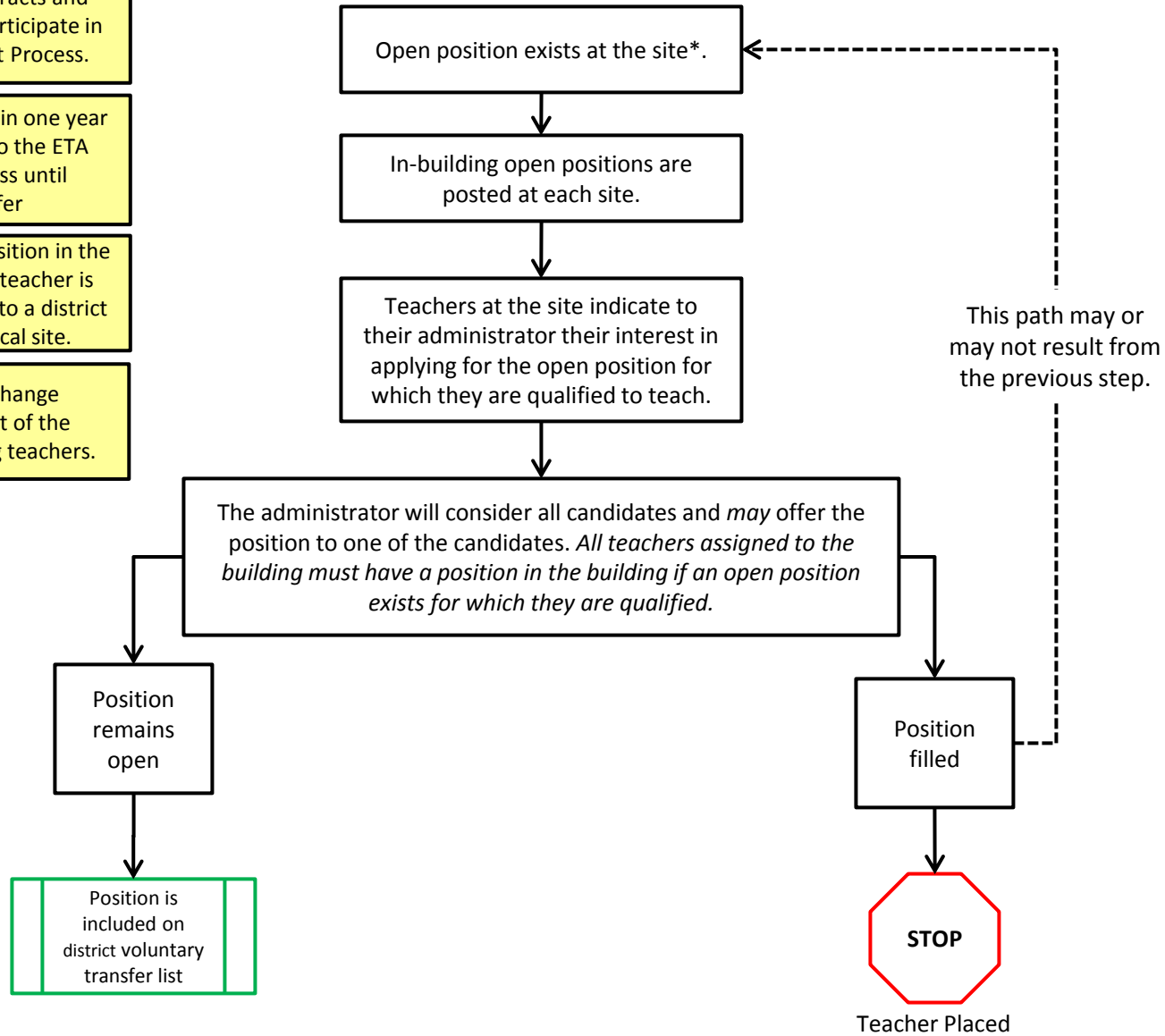


ETA Transfer Reassignment Process

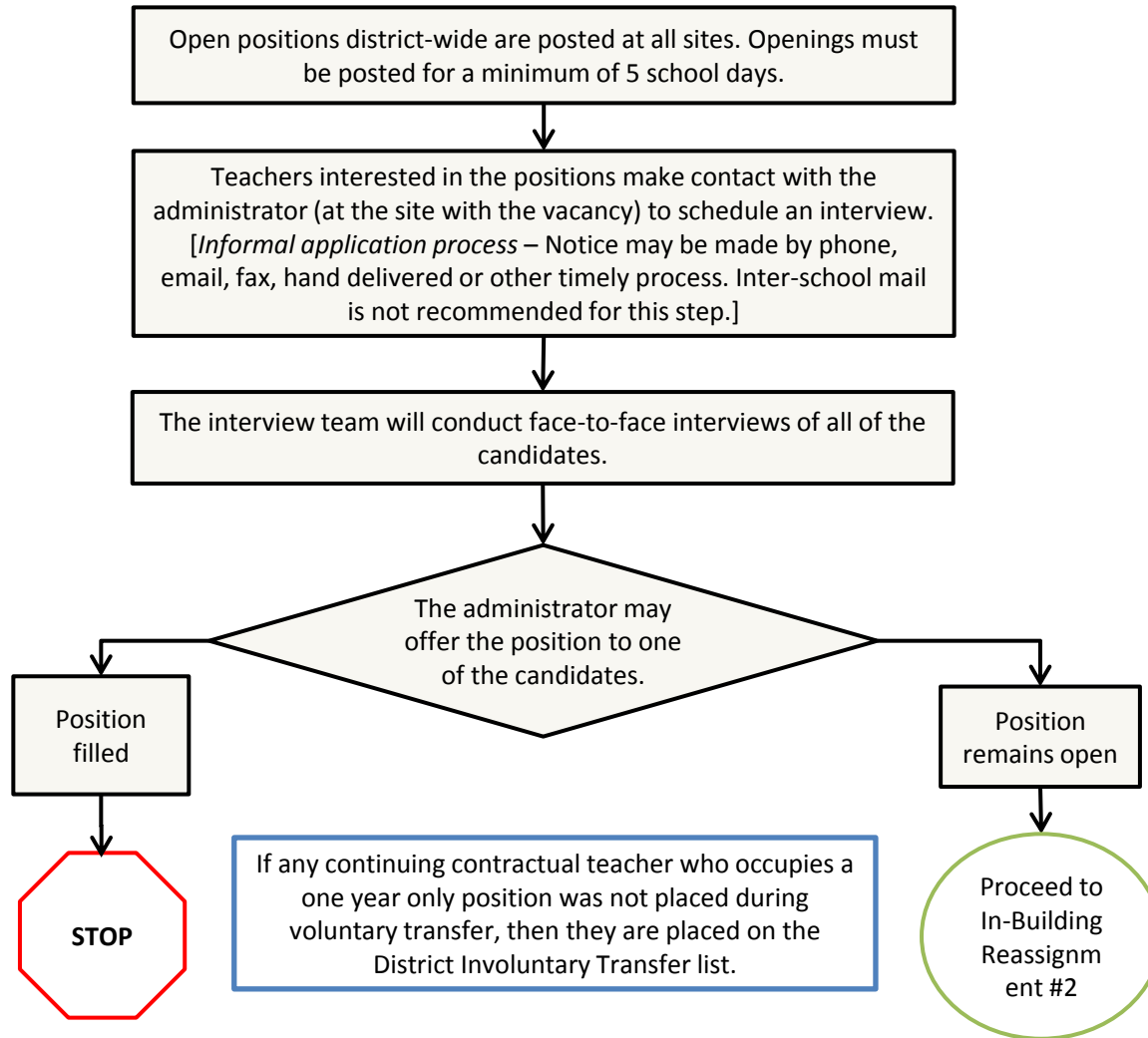
Step 1: In-building Reassignment

- Teachers in one year only contracts and post-October 1 hires do **NOT** participate in the ETA Transfer Reassignment Process.
- Continuing contractual teachers in one year only positions do not enter into the ETA transfer reassignment process until Step 2: Voluntary Transfer
- Teachers may reassign to any position in the physical building provided the teacher is not currently in or reassigning into a district program housed at the physical site.
- * Teachers at the site may change assignments with the consent of the supervisor and the participating teachers.



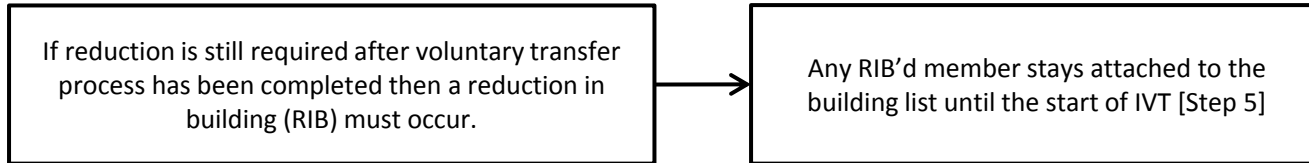
ETA Transfer Reassignment Process

Step 2: Voluntary Transfer

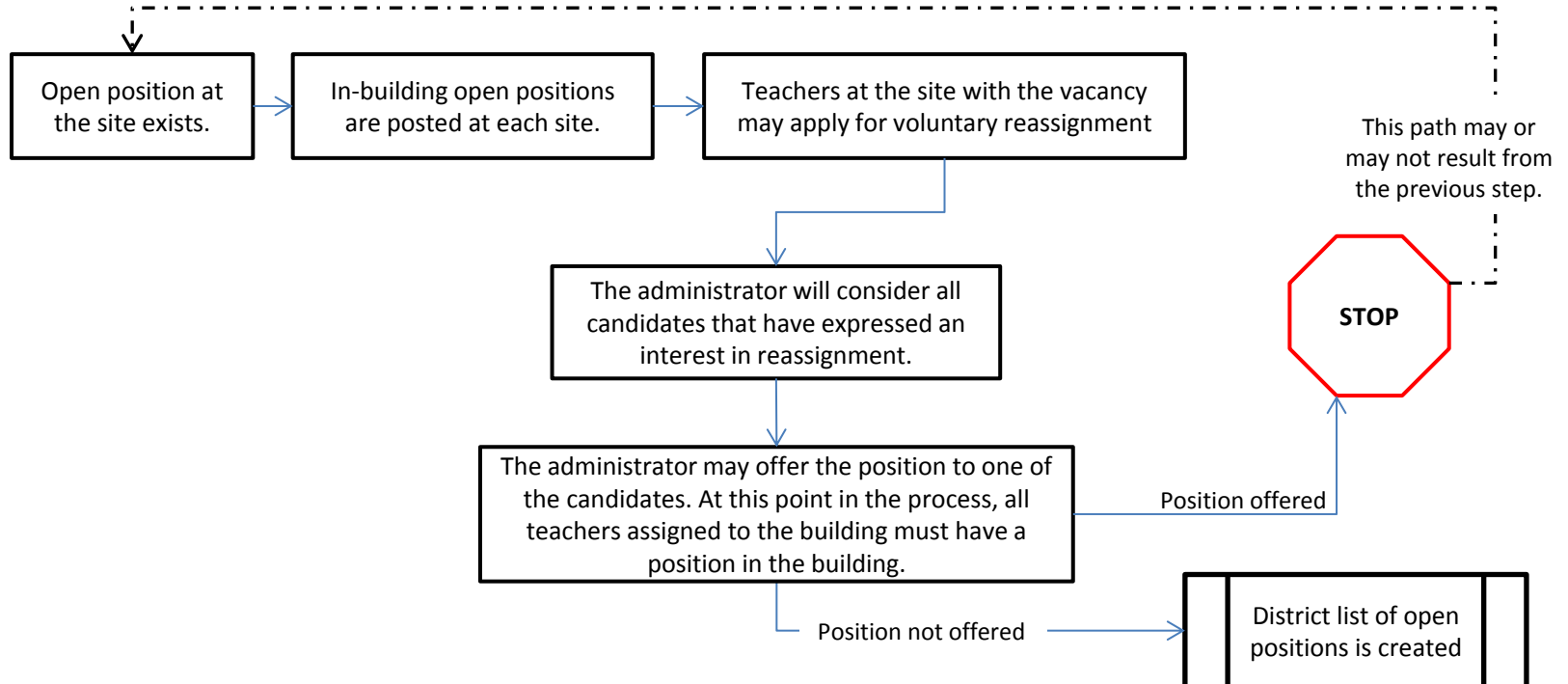


ETA Transfer Reassignment Process

Step 3: Reduction in Building (RIB)



Step 4: In-Building Reassignment (Round Two)



ETA Transfer Reassignment Process

